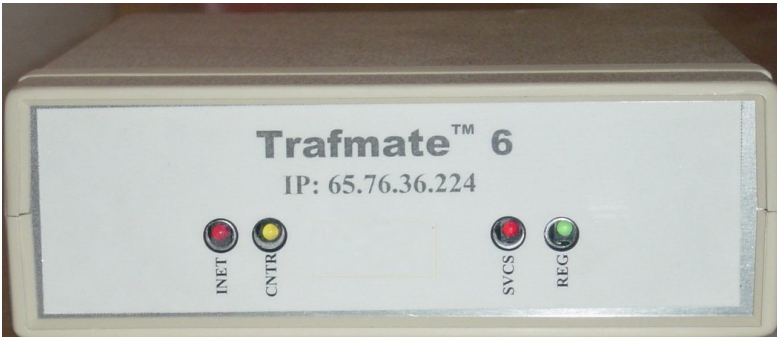


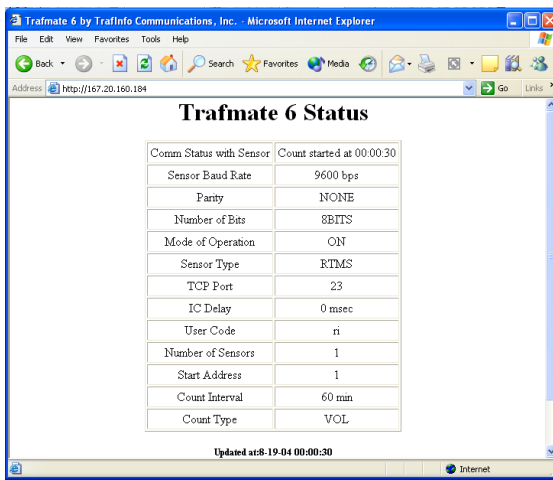
# Trafmate™ 6

## Wireless Telemetry For Traffic Monitoring

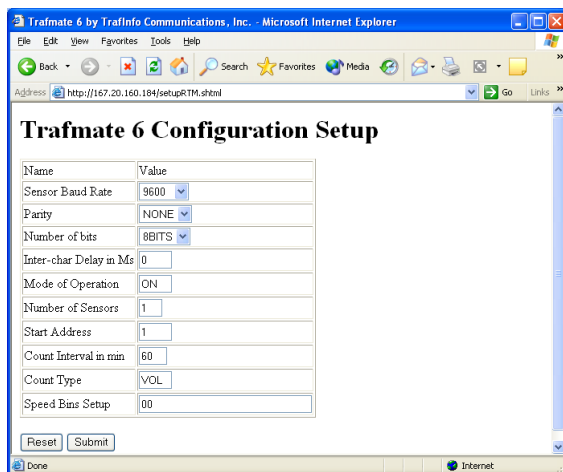


Trafmate™ 6 wireless modem is the most advanced of TrafInfo's line of wireless telemetry products for traffic monitoring. It incorporates many unique features such as automatic download of traffic data, real-time two-way communication for diagnostics, trouble-shooting and re-programming of the traffic monitoring devices, as well as standard web browser interface for modem setup and status.

The unique feature of Trafmate 6 is its ability for real-time communication with a remote traffic counter or sensor over the Internet. Software that were designed to communicate with a counter or sensor either by direct-connect to a computer or over a dial-up telephone modem, can now be used to communicate with the remote device over the Internet (see back for details).



The Trafmate 6 comes with a static IP address. Consequently, a standard web browser is used to check the status of the modem as well as configure it depending upon the type of counter or sensor.



- Digital PCS wireless communication
- Static IP-addressable device
- Internet browser user interface
- Real-time communication capable
- Automatic download of daily files
- Nationwide service
- Fixed monthly charges with unlimited usage
- Available as OEM module



TrafInfo Communications, Inc.  
556 Lowell Street, Lexington, MA 02420  
Tel: (781) 710-5380

[www.trafinfo.com](http://www.trafinfo.com)

# Trafmate™ 6 Specifications

## Power Requirements:

Average 150 milliamps @ 12VDC (voltage range: 8-20V DC)

## Interfaces:

Standard DB9 (male) RS-232 serial port (user-selectable up to 115400 bps)  
2.5mm (center positive) DC plug  
Mini-UHF antenna connector (female)

## Wireless Transceiver:

Frequency: Tx:806-821Mhz; Rx 851-866 Mhz  
Data-rate: 19.2 kbps and higher  
Antenna: 3db gain, 15watts (max)

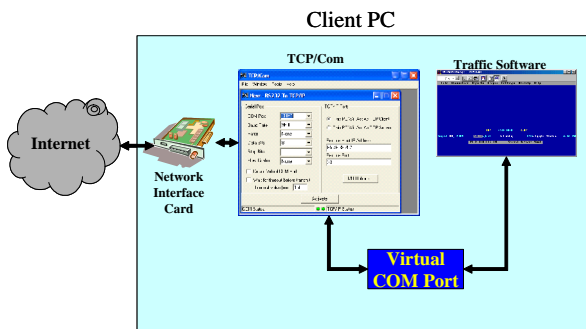
## Environmental:

Operating Temp: -40°C to +85°C  
Humidity: 95% non-condensing

## Dimensions:

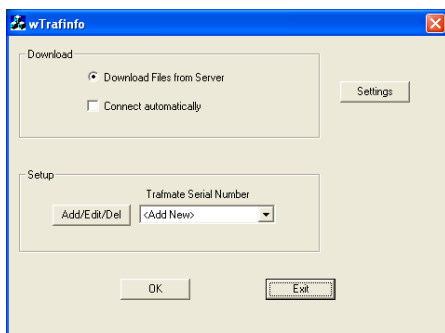
7 inches x 6 inches x 3 inches

## Real-time Communication Over The Internet



Most traffic setup and reporting software provided by the counter/sensor manufacturers are designed to run on a PC and communicate with a counter either directly over a standard RS-232 serial port or using a modem and a dial-up telephone connection. In order for the same software to communicate with the remote counter over the Internet, in addition to Trafmate 6, **TCP-Com** software running in the background is necessary to channel all data to/from the software over to the Internet. TCP-Com is configured to use a virtual COM port and run in the background to communicate with the IP-address of Trafmate 6 over TCP port 23. Any data sent by the counter software through a serial port is received by TCP-Com via the virtual COM port and sent to Trafmate's IP address. Any response from the counter is transmitted back by Trafmate 6 and is received by TCP-Com and channeled through the virtual COM port to the traffic software.

## Automatic Download of Daily Files



Trafmate 6 has the ability to automatically download daily files from a select number of counters/sensors including all of Peek Traffic counters, all of Diamond and IRD counters, the RTMS sensor by EIS, SmartSensor by Wavetronix, SAS-1 acoustic sensor by SmarTek Systems, and the Canoga™ detector card by GTT. In the case of counters, soon after midnight, when the counter saves the 24-hour daily file into memory, Trafmate queries the counter to download the file. In case of sensors, Trafmate polls the sensor once every 30 seconds and accumulates the data over a 24-hour period. In either case, the 24-hour daily file, as soon as it is created/extracted, is automatically transmitted wirelessly to TrafInfo's internet server. The files are stored on the TrafInfo server until downloaded by the user over the Internet using the **wTrafinfo** software. The wTrafinfo software is run on a standard PC with access to the Internet. It connects to the TrafInfo's server, downloads the data, and saves it on the PC in ASCII text similar to Peek's PRN format or in the CSV format. Binary files from counters are saved in the native binary format.



TrafInfo Communications, Inc.  
556 Lowell Street, Lexington, MA 02420  
Tel: (781) 710-5380

[www.trafinfo.com](http://www.trafinfo.com)

# Trafmate™ 6

## Advantages over Traditional Modems

### Automatic Download of Daily Files

The Trafmate 6 automatically downloads daily files from a traffic counter after midnight and transmits it to the **trafinfo.com** server. In other words, every traffic monitoring station with a Trafmate 6 will automatically upload the 24-hour daily file on to the server. Using the **wTrafinfo** client software, the user can download the data from the **trafinfo.com** server. Benefits of automatic download of daily files include:

- The user does not have to spend time manually downloading data for each counter. Instead, the user simply downloads data from multiple traffic monitoring stations for multiple days (since the last download) from the **trafinfo.com** server over the internet in a matter of seconds.
- As data is downloaded every day, even if the traffic counter were to fail, only a maximum of one day's worth of data would be lost.
- As data is downloaded every day, the user will be able to identify equipment failure when the data does not get downloaded which would be within 24-hours.

### Dual Use of traffic monitoring station for both HPMS and ITS Data Needs

A truly unique advantage of the Trafmate 6 is that it can enable dual use of a traffic monitoring station by the user to meet both the Highway Performance Monitoring System (HPMS) requirements as well as Intelligent Transportation System (ITS) data needs. With the Trafmate 6, a TOC data polling software can have access to the real-time data to serve ITS requirements. In addition, the Trafmate 6 can provide access the 24-hour daily files used to meet the federal HPMS requirements and other planning and design needs.

### Low monthly charges with unlimited usage

The wireless charges are a low \$22 per month unlimited usage.



TrafInfo Communications, Inc.  
556 Lowell Street, Lexington, MA 02420  
Tel: (781) 710-5380

[www.trafinfo.com](http://www.trafinfo.com)